



HS2 is going to happen, so how should we make the best of it?

HS2 Socialise and Strategise Meeting,
Wendover Memorial Hall
24th November '23



Situation



- The threat of HS2 has blighted the Wendover Community since the announcement of the route in 2013.
- The reality of the railway could further depress the local economy unless we take positive action.
- We have an opportunity to improve the situation over the next 2-3 years, and seek your ideas and feedback

...have your say about how Wendover can make the best from the HS2 project



Agenda



- HS2 Update
 - Construction, Issues and Opportunities
- Questions and Answers
- Breakout tables
 - Water, Noise, Traffic and Environment
 - Any other issues

...have your say about how Wendover can make the best from the HS2 project



HS2 Construction update



- HS2 “Phase 1” to be built
 - Reduces congestion on West Coast Main Line for freight
 - Six London platforms limits “trains per hour” to 8, (not 18)
- Construction probably continues to 2029
 - “5 year” Green Tunnel plan still has about 4 years to run
 - Tunnel systems, track, and overhead line equipment to follow
- Train Noise and Small Dean Viaduct dominant features



Wendover Dean Viaduct



- Wendover Dean Viaduct is 450m long, and up to 16m above ground level



Small Dean Viaduct



- Small Dean Viaduct is 350m long, and up to 15m above ground level
- Crosses the A413 and Chiltern Line



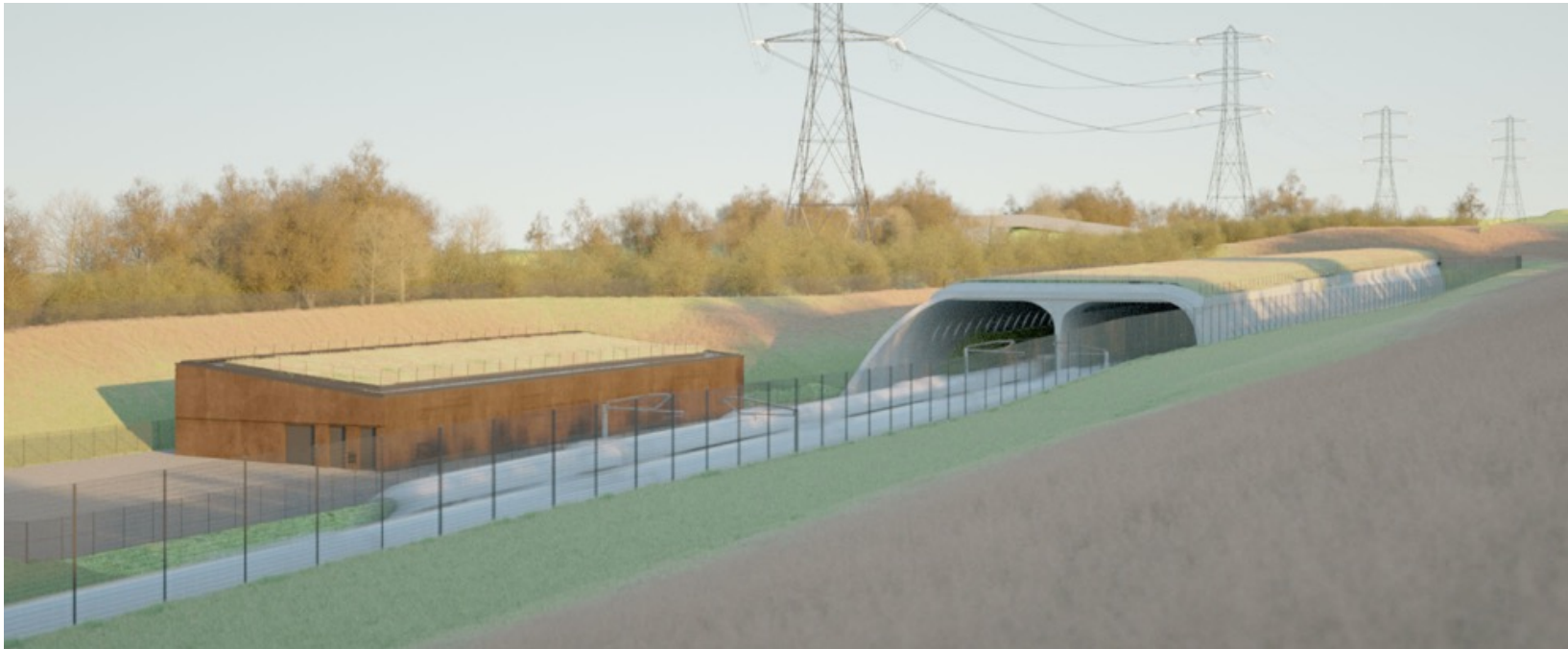
Small Dean North Embankment



- Embankment is 700m long, and up to 16m above ground level alongside the Wendover Bypass



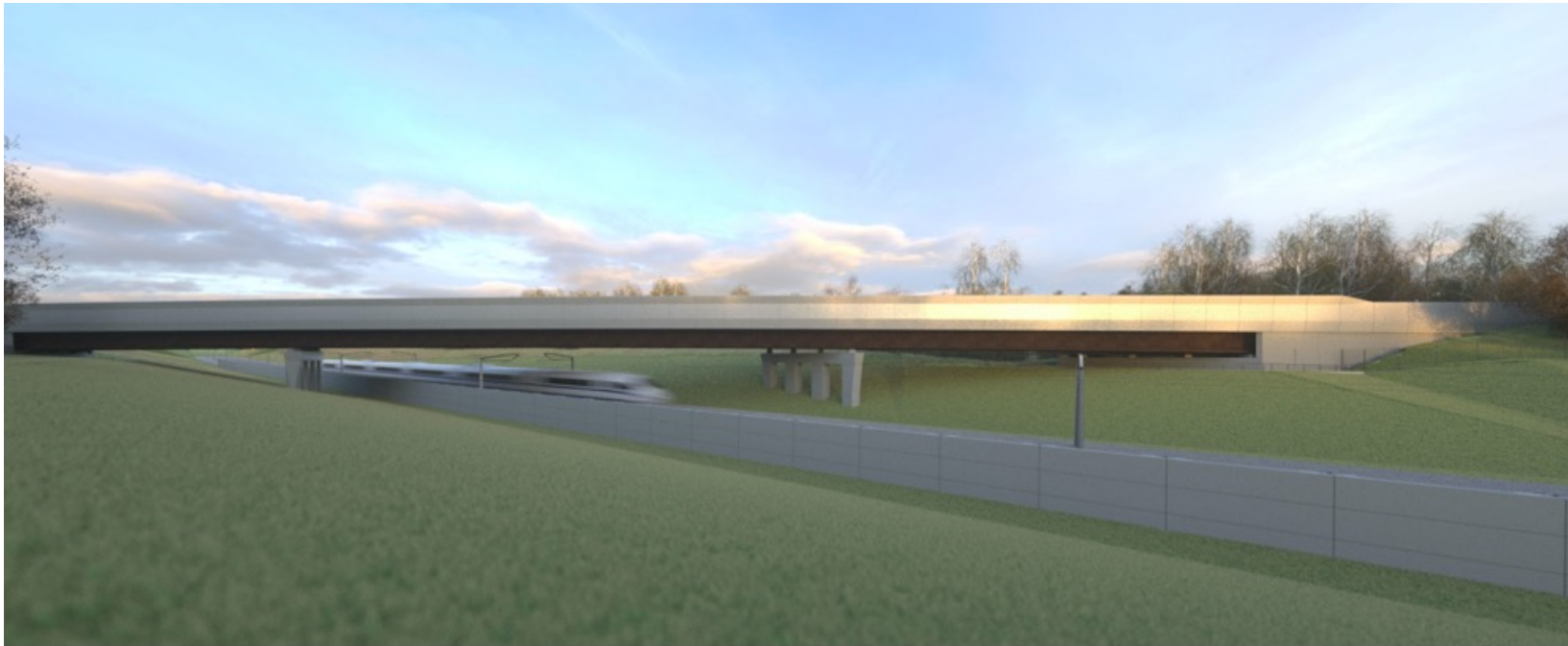
Wendover Green Tunnel



- “Cut and Cover” tunnel, 1400m long; from Bacombe Lane to Folly Bridge



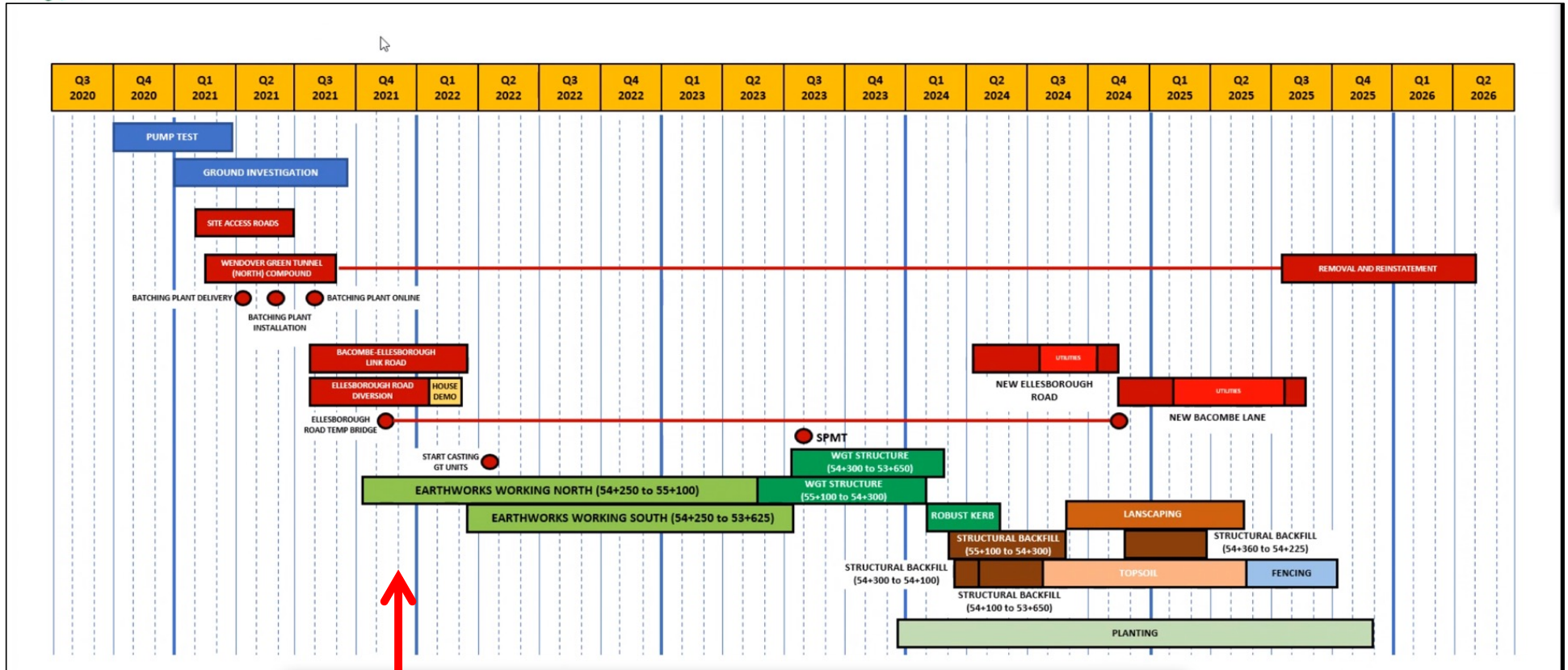
Wendover North Cutting



- Cutting is 1600m long, and down to 10m below ground level
- Folly Bridge to Nash Lee, under the Nash Lee Road



5 year Green Tunnel plan now 2 years late



Nov '23

Source: EKFB '20



Our key HS2 Issues for Wendover



- Anticipated excessive night-time peak train **noise**
 - HS2 expect 228 North Wendover homes over WHO limit
 - *We're contesting HS2's mitigation funding process*
- Wendover worsening **traffic** congestion
 - A413 Small Dean morning rush hour impacting High Street
 - *Bucks Council can't justify widening from their 2033 forecast*
- Protecting Wendover's **watercourses**
 - Underground wall at North Cutting should protect Weston Turville Reservoir and Aylesbury
 - *We're ensuring monthly monitoring of the impact*



Noise

HHS2 Socialise and Strategise Meeting,
Wendover Memorial Hall
24th November '23
Email: enquiries@whs2.org



What we've achieved



- Very Low Noise surfacing on the Bypass
- Built tools to challenge EKFB's noise predictions
- Houses affected by excess noise reduced from 306 to 228 (north Wendover)
- Discovered HS2's funding policy for peak noise mitigation does not appear to meet HS2 Act legal undertakings



Typical sound levels



Vacuum cleaner at 1m

80

Pavement of city street

Loud voice at 1m

70

Aircraft at height of 200m

Normal voice at 1m

60

**30m from petrol
lawnmower**

Open plan office

50

**Lorry at 100m, heavy
rainfall**

Refrigerator at 1m

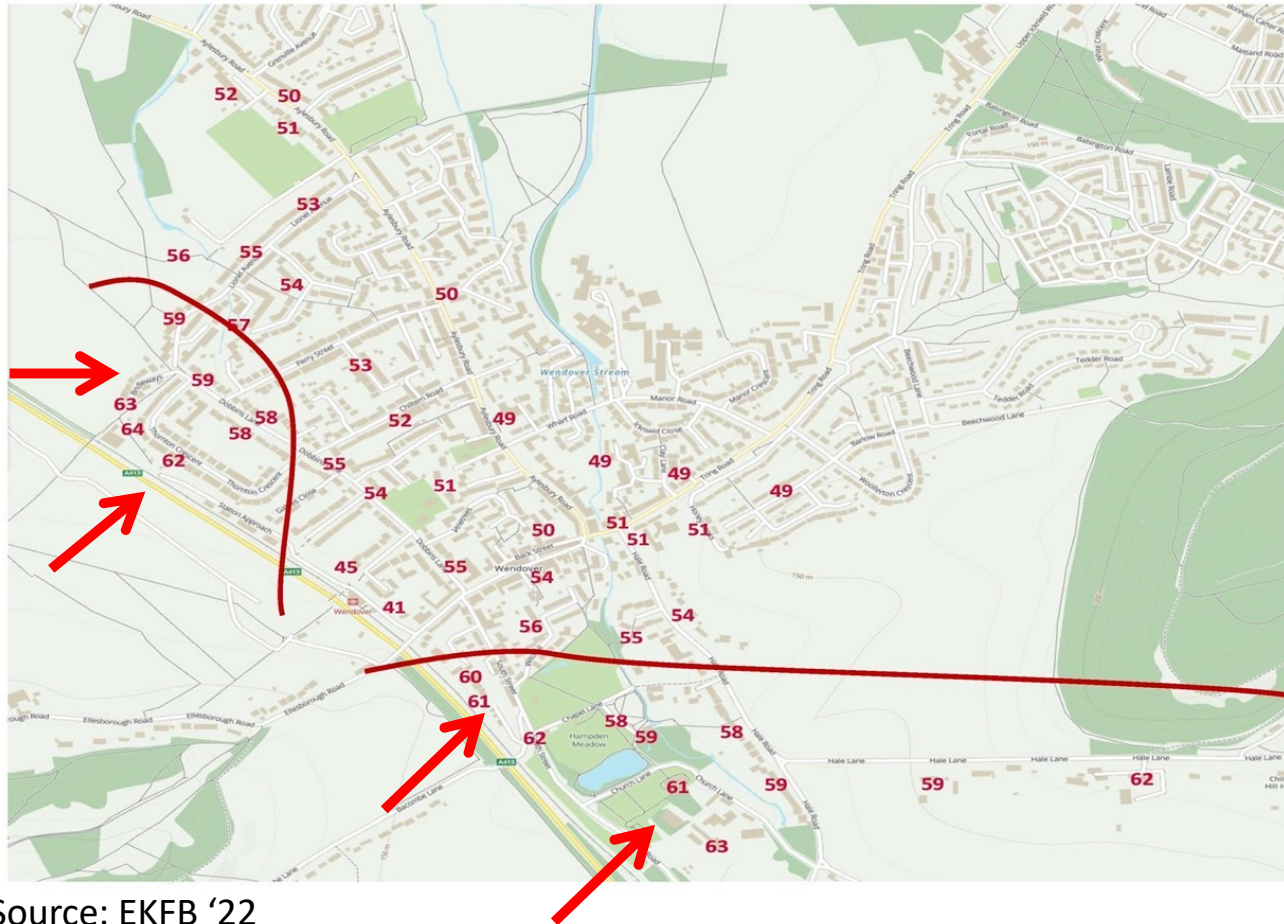
40

**Suburban area at night, no
local traffic**

- The WHO peak noise night-time threshold for sleep disturbance is 60dB
- This is included in HS2's Environmental Minimum Requirements
- Noise reflection at the façade reduces this to 57.5dB



Wendover Peak train noise

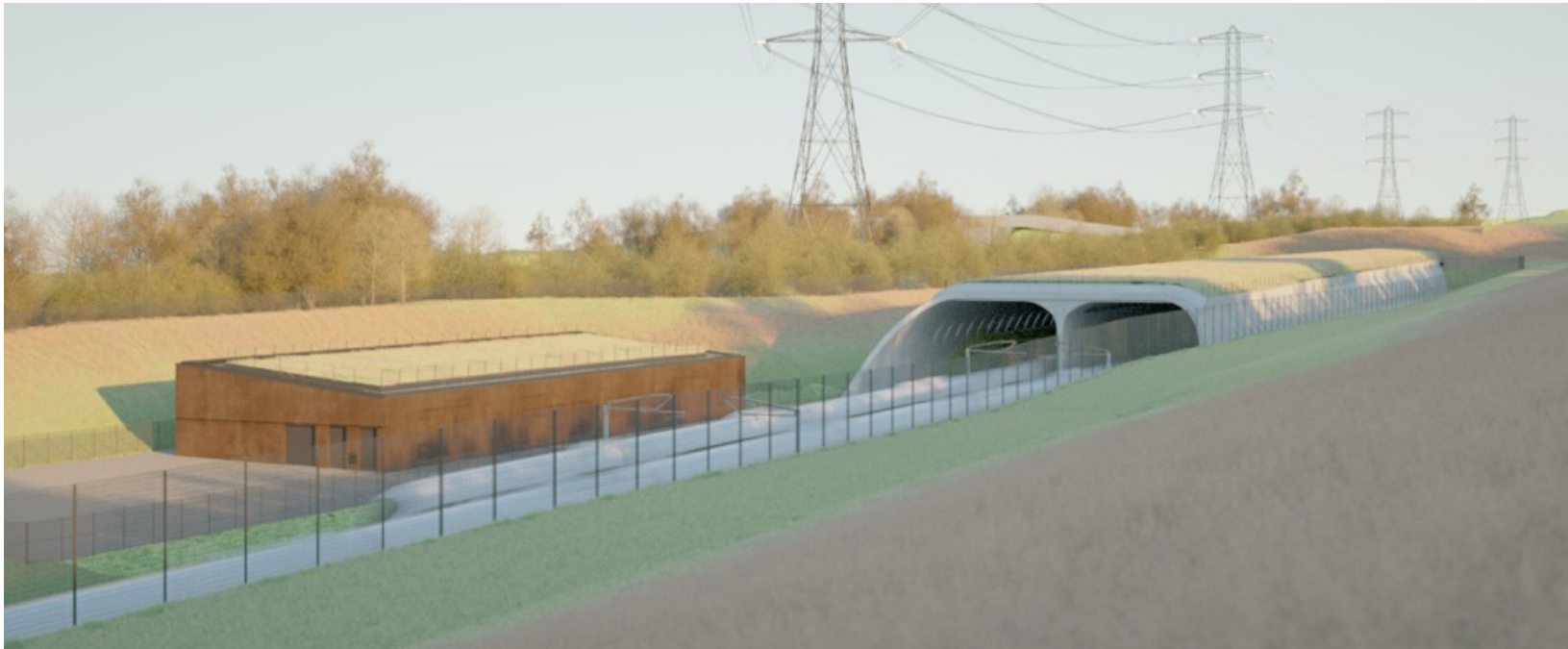


Source: EKFB '22

- 349 Wendover homes exceed peak noise threshold
- St Mary's Church and Chiltern Way Academy close to the Small Dean Viaduct.



Green Tunnel North Portal



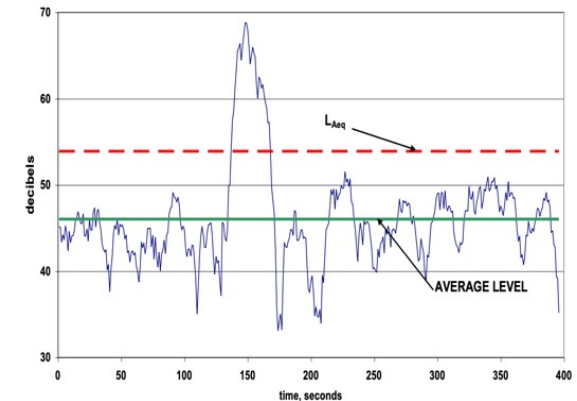
- Bridleways houses within 200 metres of the Green Tunnel portal
- Trackside noise barriers beside the portal building would give benefit



HS2 noise mitigation funding



- Noise mitigation cost/benefit analysis is based on average noise
- However peak noise may be more important to most people (when a train is passing).



- The HS2 Act includes a peak noise (LAmax) requirement of 60dB.
- HS2 have modified the cost/benefit algorithm to include LAmax.
- However this provides no benefit for values less than 65dB.

HS2 Ltd's policy effectively avoids mitigation of peak night-time noise



Currently proposed '24 initiatives



- Seek funding for better mitigation of peak noise in line with the HS2 Act undertakings
- Get clarity on how train noise will actually be measured in the community
- Get clarity on how excessive train noise will be mitigated following “Bringing into Use” assessment

DRAFT



Traffic

HS2 Socialise and Strategise Meeting,
Wendover Memorial Hall
24th November '23

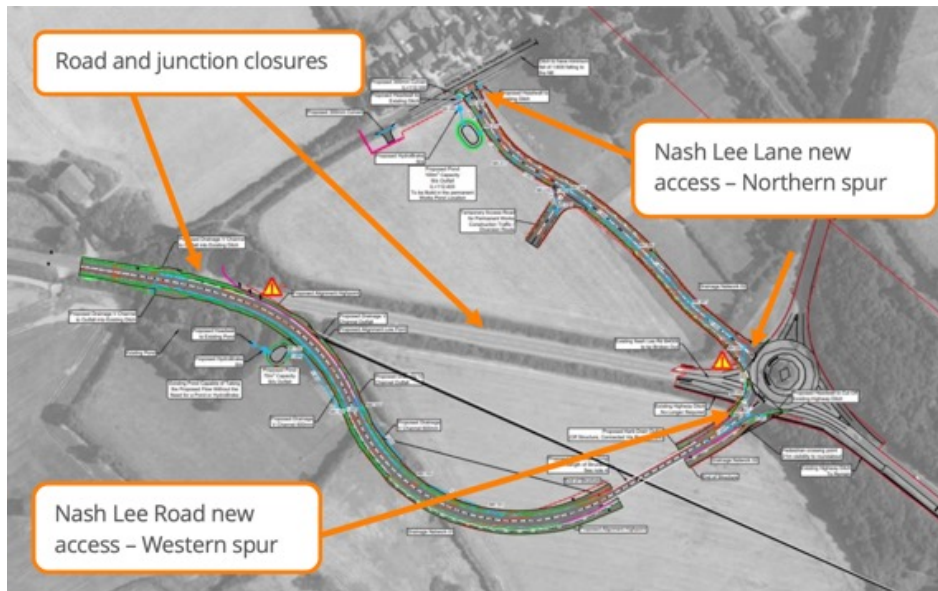


What we've achieved



- Redesign of the Small Dean Viaduct to allow future widening of the A413 if needed
- Identification that Bucks Council's 15 year traffic forecast limits scope for strategic developments
- Provision of Very Low Noise surfacing on the Bypass
- Provision of electronic roadside displays to provide advanced warning of road closures
- Mitigation of road safety design flaws on the new Nash Lee Lane

Temporary roads



Nash Lee Road and Lane diversions



Ellesborough Road diversion

Temporary Crossings



Nash Lee Road crossing

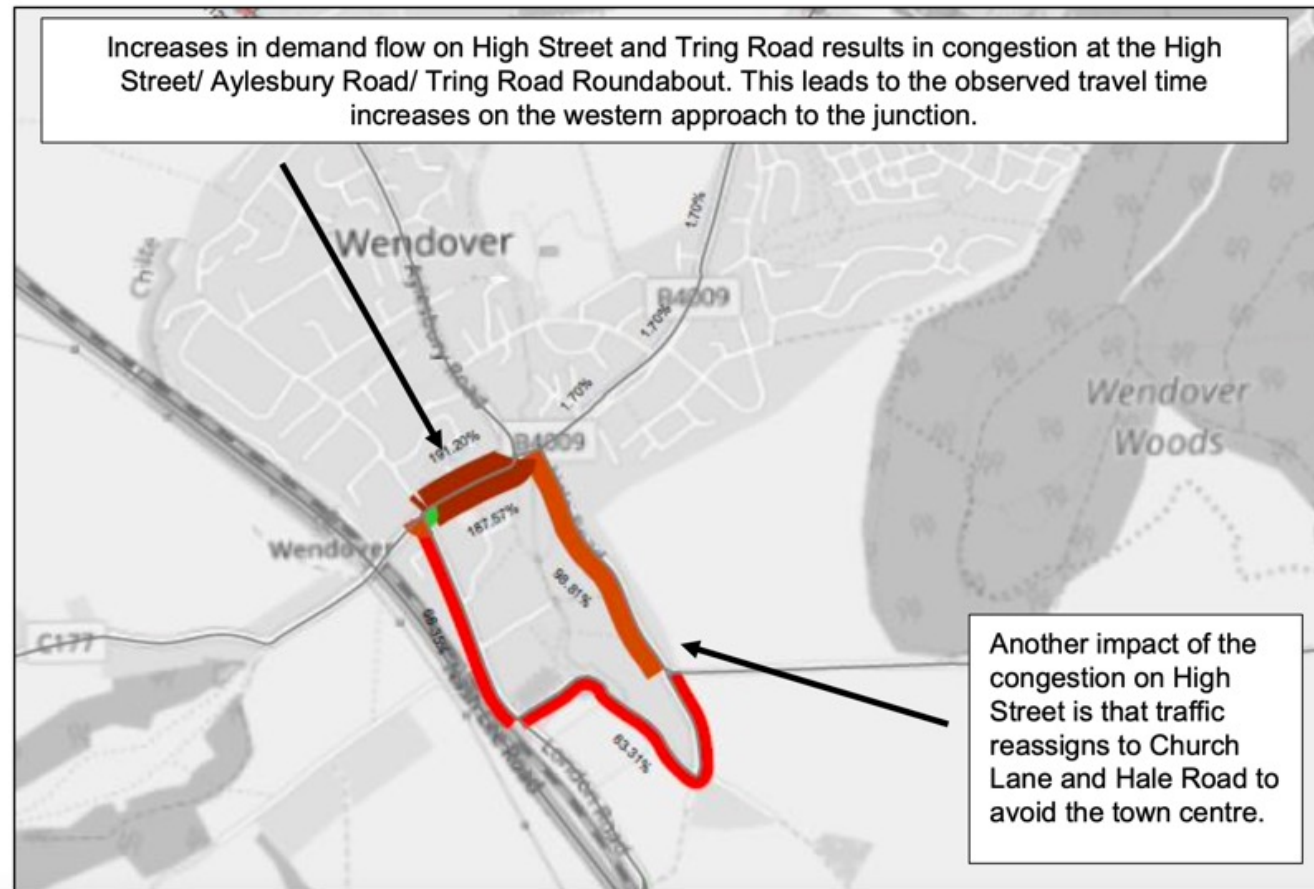


Bacombe Lane crossing



A413 under the Small Dean Viaduct





This forecast does not include the impact of housing at RAF Halton or HS2 A413 issues.

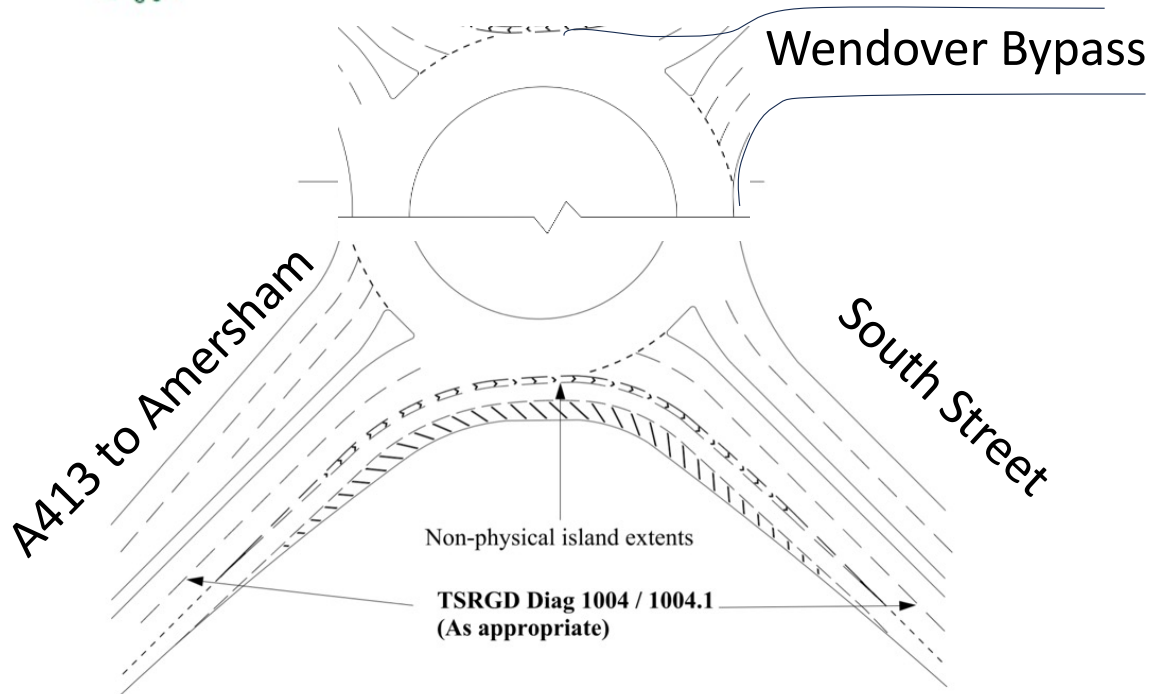
Travel time increase

 >100%

 75-100%



Proposed '24 initiative



- Seek development of the A413 Small Dean roundabout with a “segregated left lane” to allow South Street vehicles to merge with morning rush-hour southbound bypass traffic.

Source: DfT CD116 “Geometric design of roundabouts”

DRAFT



Water

HS2 Socialise and Strategise Meeting,
Wendover Memorial Hall
24th November '23



What we've achieved



- Proved the threat to groundwater from the Coombe Hill Aquifer
- Forced serious consideration of the impact on Weston Turville Reservoir SSSI and Flood risk in Aylesbury
- Established Hampden Pond as a key community asset for support

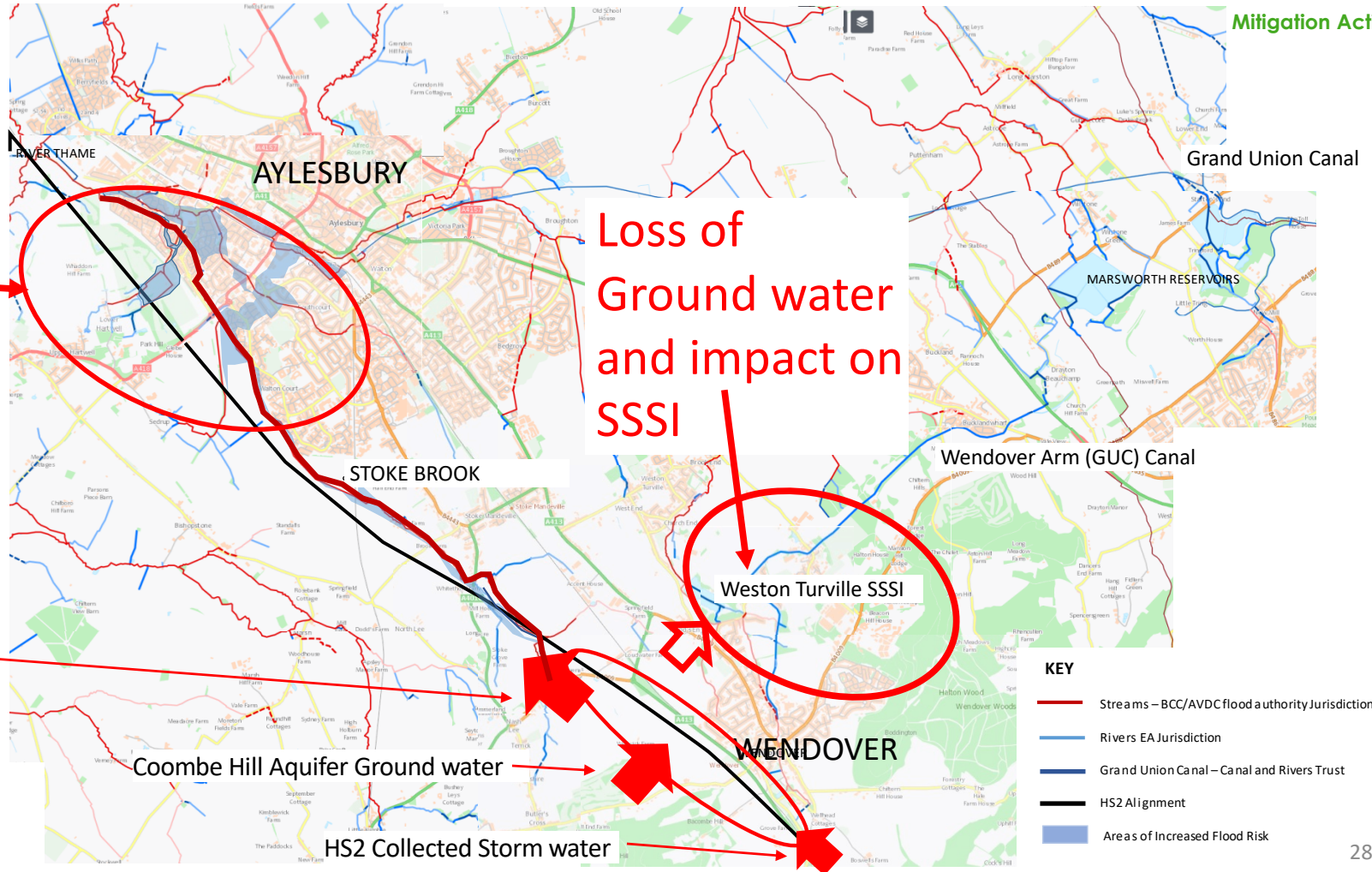


Our Concerns

Flood Risk Area

Loss of Ground water and impact on SSSI

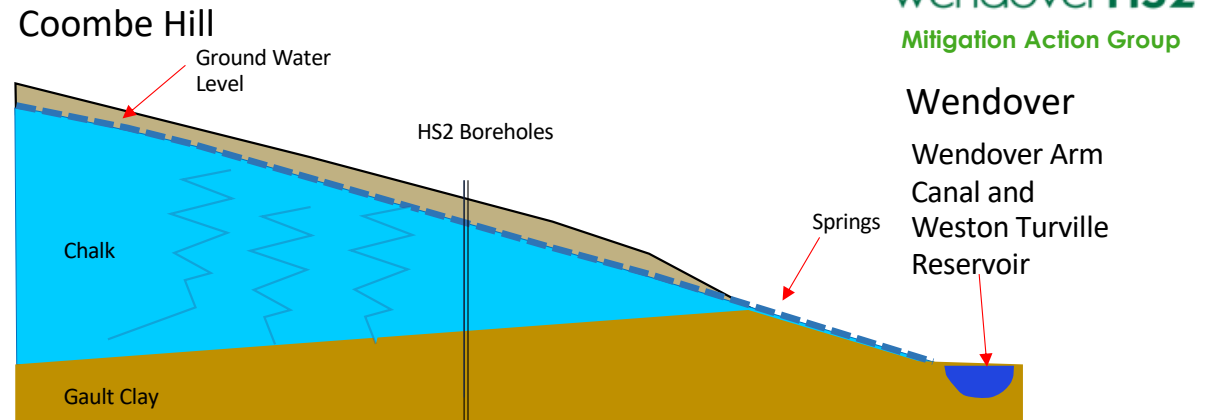
Water diverted down Stoke Brook



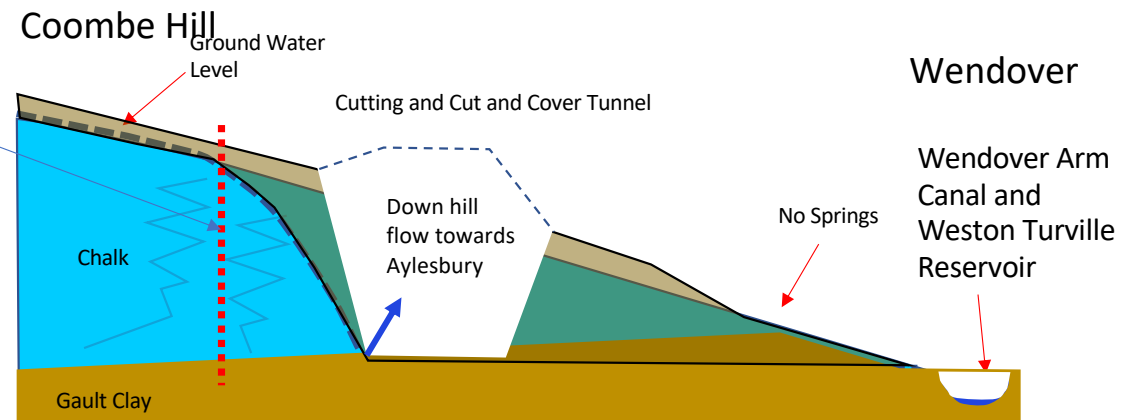


Our Concerns

- Cross section looking North
- Fissured Chalk stores ground water

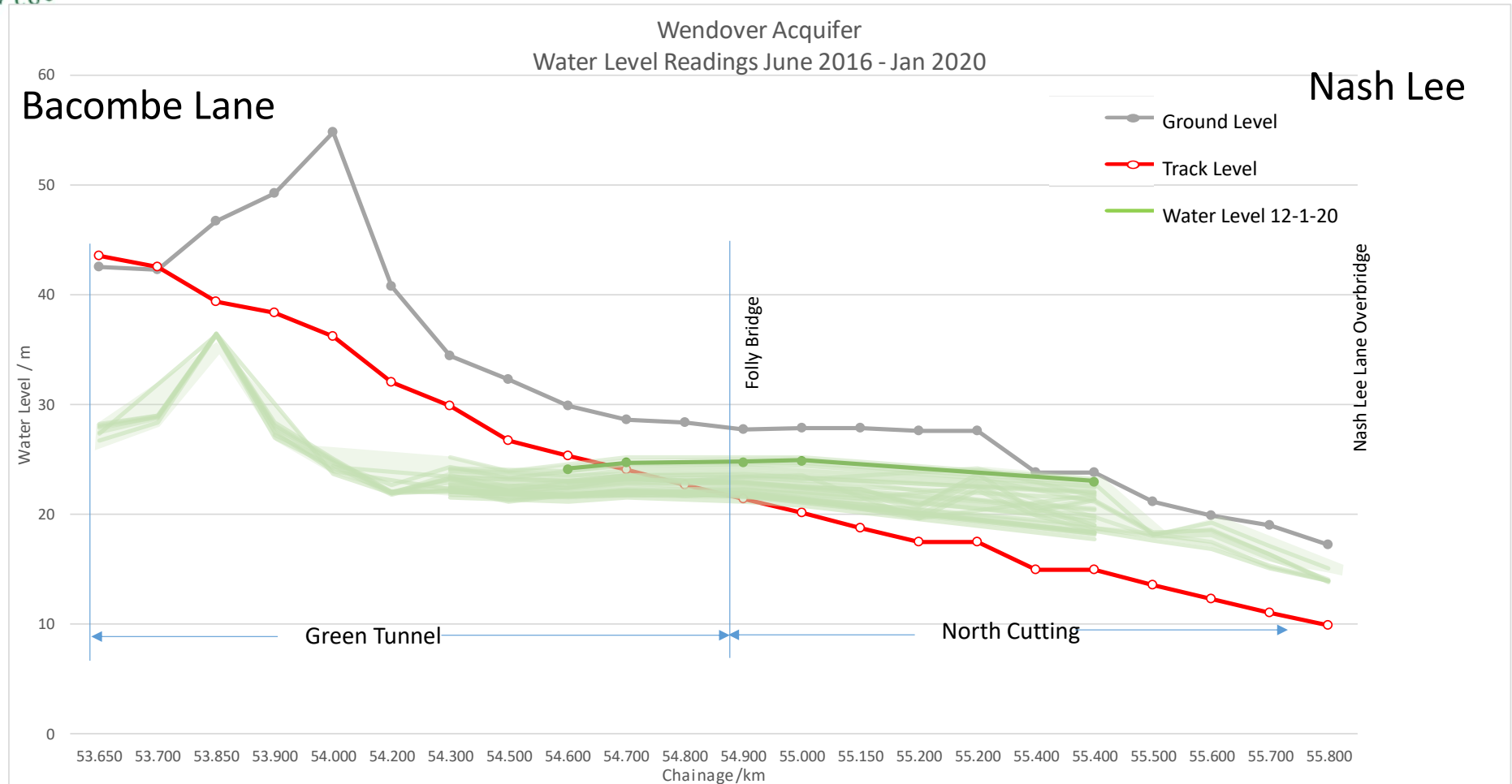


- Cutting allows ground water to escape
- Reduction in flow to the Canal



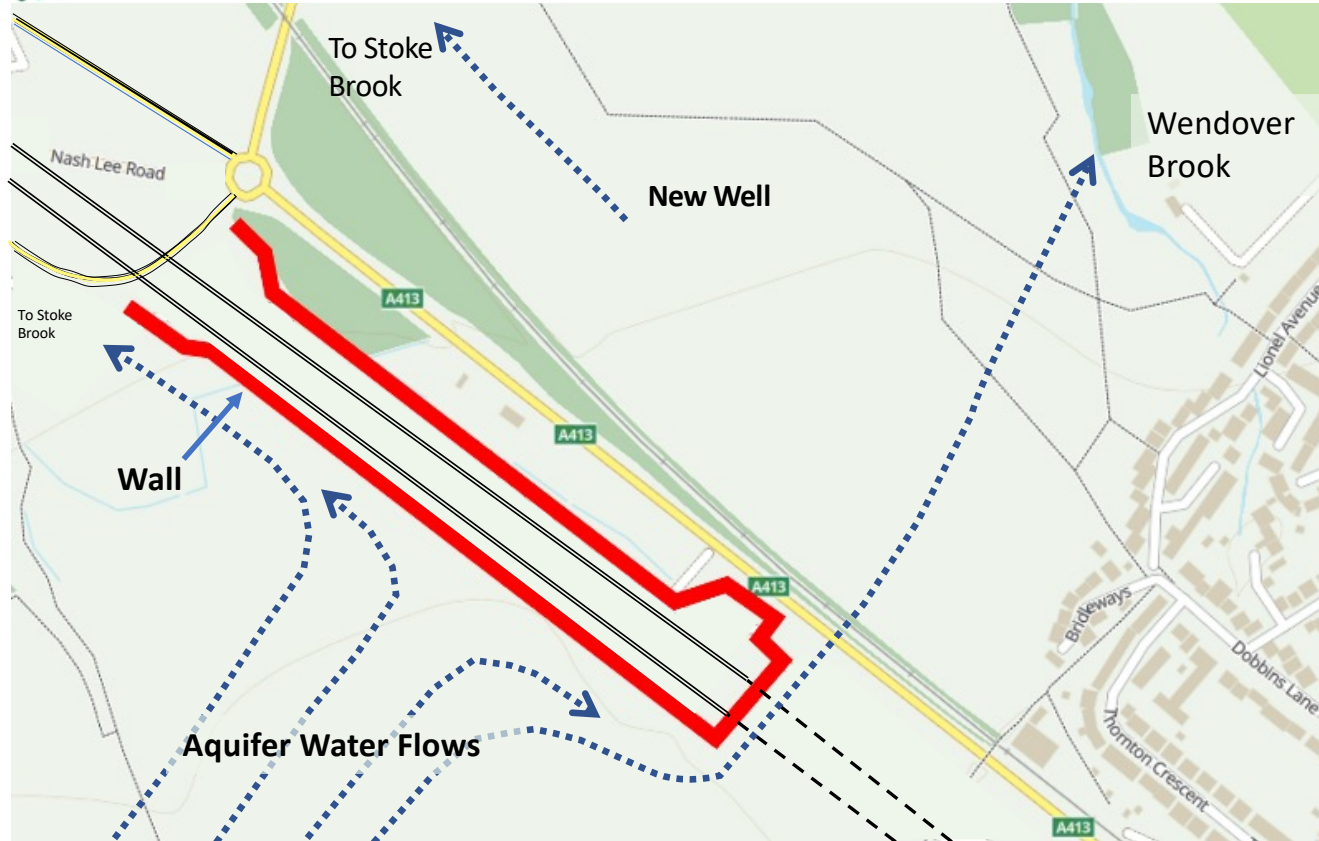


Track 5m underwater at Folly Bridge





North Cutting Aquifer mitigation



- Wall stops water flow into cutting, but allows some feed to Wendover Brook and Weston Turville SSSI
- Water flow and quality measurements on regular basis

Source: EKFB '23



Proposed '24 initiatives



- Ensure North Cutting groundwater monitoring data is acted upon to maintain current quality for Weston Turville Reservoir SSSI and Wendover Arm Canal
- Seek funding for Hampden Pond well to improve water level
- Push for further sources of water feed into Wendover Arm Canal from catchment ponds

DRAFT



Environment

HS2 Socialise and Strategise Meeting,
Wendover Memorial Hall
24th November '23



What we've achieved



- Surveyed community opinion on
 - the visual impact of the Small Dean Viaduct
 - the noise reduction options for the Wendover bypass
 - the reuse of the old Cricket Ground following HS2
- Reviewed HS2's monthly Construction Noise and Air Quality Reports, and escalated non-compliances



Environmental focus areas



- Land restoration or repurposing as part of future HS2 handback
- Protecting the local environment through monitoring HS2 Code of Construction Practice issues.



Cricket Ground '22-'23 reuse survey



HS2 proposing:

- Landscaping with bushes and scrub with wildflowers
- Provision for cycle track above the tunnel

- 87% favour public access woodland, and 57% oppose a closed nature reserve.
- ~89% oppose car parking; ~64% oppose sports facilities

n = 46 responses



Land reuse target areas



- The Cricket Ground
- Ellesborough Road housing
- Ian Rennie Memorial Wood
- The 80 acre field adjacent to the Bypass
- North Portal compound and Concrete works site
- The temporary Nash Lee Lane and Road areas

HS2 expected to “restore” sites to previous state, and give previous owners first refusal to repurchase



Proposed '24 initiatives



- Support locally reported issues for non-compliance with the HS2 Code of Construction Practice, with escalation as needed
- Engage previous landowners about how land to be released by HS2 is best restored or repurposed
- Monitor monthly Construction Noise, Air Quality, and Water Quality reports

DRAFT



Other Opportunities

HS2 Socialise and Strategise Meeting,
Wendover Memorial Hall
24th November '23



HS2 Opportunities



- HS2 funded schemes
 - Community and Environment Fund (CEF)
 - <£10k, <£75k, and <£250k
 - Business and Local Economy Fund (BLEF)
 - £10k-£250k
 - BC Road Safety Fund
 - HS2 Chilterns AONB Review Group Additional Projects



Wendover Arm Canal Towpath



- Renovation from Wharf Road to Halton



Hampden Pond renovation



- Initial phase to repair banks and clear debris now complete
- Seeking funding for well to improve water levels



Misbourne Greenway Cycle track



- New cycleway between Dunsmore Lane and Great Missenden



Local Community and Environment Fund projects



- Hampden Pond Restoration (£23,269)
- Witchell Car Park Extension (£74,990)
- Wendover Scout Hut Solar Power (£10,000)
- John Colet School 3G Football Pitch (£56,250)
- Wendover Swimming Pool Refurbishment Ph 2 (£74,000)
- Chilterns MS Centre Exercise Access (£74,855)
- Chilterns Forest Golf Club Changing Rooms (£27,326)
- Wendover Woods Recreation Centre (£450,000)



In Summary



- HS2 will get built past Wendover
- We're concerned about future local Noise, Traffic and Water issues
- We're protecting the local environment
 - Getting the best "after HS2" outcome
 - Supporting your Construction related issues
- We need your feedback on our 2024 proposals



Currently proposed '24 initiatives



- Noise: Get clarity on how train noise will be measured, and seek funding for better mitigation
- Water: Ensure groundwater monitoring data is acted upon to maintain current quality, and seek funding for Hampden Pond improvements
- Traffic: Seek development of the A413 roundabout to limit South Street /High Street congestion
- Environment: Establish how land to be released by HS2 is best restored or repurposed

...have your say about how Wendover can make the best from the HS2 project



Have your say



- Give us your views
- Four WHS2 breakout zones
 - Watercourses, Aquifer and Hampden Pond
 - Train Noise
 - Traffic
 - Environment and Land reuse
- WPC Other Issues desk



Thanks for coming!

Further information sources:

- Wendover Parish Council website HS2 section
- Wendover HS2 website whs2.org
 - Including the slides of this event
- Updates in Wendover News

Email: enquiries@whs2.org

A thick green rectangular border surrounds the entire content. At the top, there is a decorative arrangement of green leaves and small round berries, possibly holly or ivy, hanging down. In the background, centered behind the text, is a faint, light green circular seal. The seal features a stylized church spire in the center and the words 'WENDOVER PARISH COUNCIL' around the perimeter.

Wendover Parish Council...

...what do we do?



Our Vision

**Preserve & enhance
Wendover's
unique
character**

**Commit to a
sustainable
environment**

**Promote an
inclusive
community**


An effective Parish Council

Review of policies and processes, Access to papers on website, Councillor contact details, Phones divert to mobile when out of office




Our Mission

Preserve & enhance Wendover's unique character



- Welcome to Wendover
- Utilising the Manor Waste
- Clocktower repair
- Tourism strategy
- Parking review
- Haddington Play Park
- Planning policies
- Improved signage

Commit to a sustainable environment



- Climate emergency plan
- HS2 mitigation
- Support the work of CLAW
- Becoming carbon neutral
- Hampden Pond improvements
- Clock tower wall
- Litter picks
- Planting trees

Promote an inclusive community



- Local organisation links
- Skatepark project
- Improved online presence
- Events to build community – Christmas, Picnic in Park
- Welcome to Wendover website & campaign
- Men in Shed Mental Health Support
- Warm Welcome Café

A decorative border of various green leaves and branches runs horizontally across the top of the slide, framing the title.

How we differ from Buckinghamshire Council

Wendover PC

- Allotments
- Devolved services – we complete work on behalf of Buckinghamshire Council - grass verge cutting in 30mph, footpath edges, hedge enforcements. This agreement does not cover PMG
- Dog waste bins and litter bins in open spaces
- Hampden Pond
- HS2 - mitigation on behalf of the community
- Markets - weekly Thursday market and Local Produce Market on the third Saturday of every month
- Open spaces - Ashbrook Park, Witchell Meadow, Hampden Meadow and Manor Waste
- Play parks - Ashbrook Park, Haddington Park and Hampden Meadow
- Streetlights – on side roads
- Trees on parish council land
- Wendover Neighbourhood Plan - 20 year plan for infrastructure and housing

Buckinghamshire Council

- Arts and culture
- Benefits
- Buses
- Care for children and families
- Community centres
- Community safety
- Council tax collection
- Education
- Environmental Health
- Granting planning approval and building regulations
- Housing advice
- Libraries
- Licensing - taxis, alcohol, animals and takeaway
- Public car parks/ parking permits
- Recycling centres
- Refuse collection - including those on highways
- Registrar for births, deaths, marriages and civil partnerships
- Transport and roads - main route streetlights, highways and most rights of way, trees, potholes, on street parking, gritting, road works, footpaths
- School transport
- Senior citizen bus passes
- Social housing
- Some public green spaces
- Trading standards
- Waste disposal